

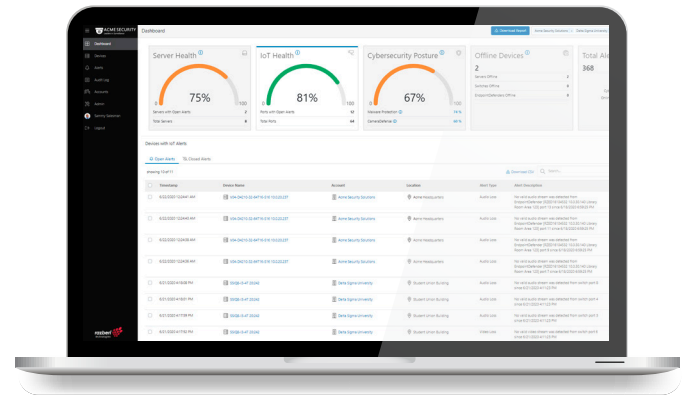
# Razberi Monitor™

## Remote Monitoring and Management for Physical Security Systems

Uptime Assurance • Cyberthreat Protection • Problem Resolution

Razberi Monitor™ is a software platform that provides a top-down view of the physical security network and ecosystem without IT resources. Purpose-built for security professionals, Monitor™ provides secure, remote visibility into the availability, performance, and cyber posture of servers, storage, cameras, and other networked security devices.

Razberi Monitor™ is an essential tool that simplifies the monitoring and support of a multi-site enterprise security system. The software predicts and prevents problems for security professionals while providing a centralized location for IT departments to view the video data.



### HEALTH MONITORING SOFTWARE

**Configurable dashboards** provide a quick view of your system's overall health and cybersecurity posture.

**Customized reports** can be generated on demand for asset management and root cause analysis. Filter values can be updated for refining your report by location, device status, alert categories, and date ranges.

**Tagged alerts** ensure that specific and actionable information is visible and getting to the right person.

### KEY FEATURES

- Detects cyber posture and problems with servers, cameras, and other IoT devices and delivers real-time alerts
- Identifies hard drive and storage problems
- Monitors cybersecurity
- Provides on-demand reports and dashboards
- Manages physical security assets
- Integrated with VMS and event management systems

### KEY BENEFITS

#### Quick Issue Resolution

Resolve issues before they become bigger problems. Ensure that your system is working as expected. Perform continuous checks on system health and cybersecurity. Prevent service outages with early warning indicators.

#### Visibility and Compliance

Create custom views and alerts by location, device, and problem type. Use reports to demonstrate system performance and compliance. Share access with your service provider for proactive support and reduced service calls.

#### Manage Physical Security Assets

Track security devices by location. Get deep visibility into configurations, operating systems, and firmware status. Know what devices need updates and patches without IT resources.



Specifications	
Cloud Host	Amazon Web Services
Secure Cloud Communications	HTTPS TLS1.2 (uni-directional)
Single Connection to Cloud	HTTPS Web Proxy Support
Default Port (outbound only)	HTTPS (443/tcp)

Camera Health Specifications	
Codecs	H.264, H.265, MJPEG, MPEG4, uLaw
Streaming Protocol	RTSP/RTP/HTTP multipart form/ONVIF
Transport Protocol	UDP/TCP/HTTP tunnel/RTSP tunnel

Alarm Management Integrations	
Video Management Software	Milestone XProtect®
Security Information and Event Management Systems	SolarWinds®, Splunk
Event Messaging Protocol	Syslog

Cybersecurity Integrations	
Antivirus	CylancePROTECT™
IoT Protection	Razberi CameraDefense™

Compliance	
Audit Log	Supports NERC Critical Infrastructure Protection CIP-007: Cybersecurity - Systems Security Management

System Requirements	
Razberi Monitor™ premise application	
Operating System	Microsoft® Windows® 10 Enterprise (64-bit)
	Microsoft® Windows® Server 2016 (64-bit)
	Microsoft® Windows® Server 2019 (64-bit)
.NET	Microsoft® .NET 4.7.2 Framework

Alerts Matrix				
Alert Types	Core™	Windows Servers	Server SwitchIQ™	Endpoint Defender™
<b>Servers and Switch Hardware</b>				
Device Offline	✓	✓	✓	✓
Malware Protection	✓	✓	✓	n/a
Disk Health	✓	✓	✓	n/a
RAID Health	✓	✓	✓	n/a
CPU Temperature	✓	✓	✓	n/a
Internal Switch Traffic	n/a	n/a	✓	n/a
<b>Windows Events</b>				
Unexpected Shutdown	✓	✓	✓	n/a
Bugcheck Reboot	✓	✓	✓	n/a
File System Unstable	✓	✓	✓	n/a
<b>Camera Health</b>				
Audio Loss	n/a	n/a	✓	✓
Video Loss	n/a	n/a	✓	✓
Excessive Reconnects	n/a	n/a	✓	✓
PoE Reboot Upon Media Loss	n/a	n/a	✓	✓
<b>Camera and IoT Cybersecurity</b>				
Default Password	n/a	n/a	✓	✓
Common Password	n/a	n/a	✓	✓
Prohibited Password	n/a	n/a	✓	✓
Brute-Force Attack	n/a	n/a	✓	✓
Denial of Service Attack	n/a	n/a	✓	✓
Unauthorized Device	n/a	n/a	✓	✓
MAC Spoofing	n/a	n/a	✓	✓
Whitelist Violation	n/a	n/a	✓	✓