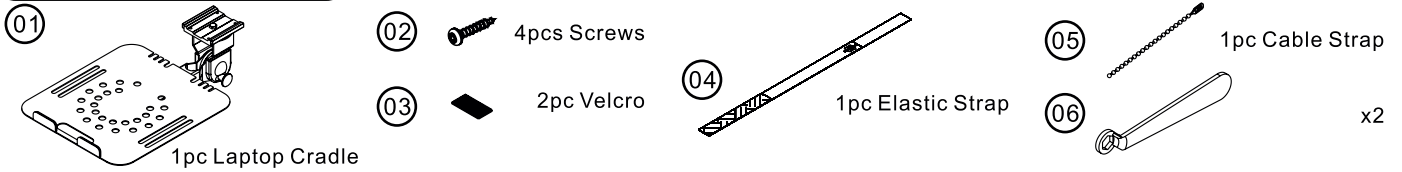
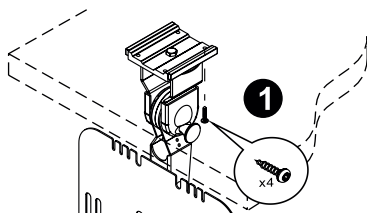


## Parts Check-List

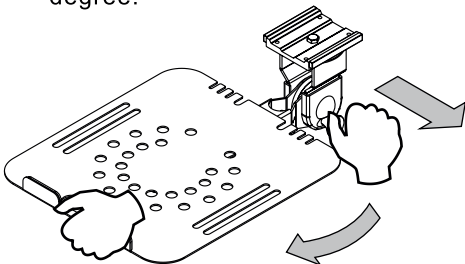


- 1** 4 pcs screws to secure the holder under the desk!

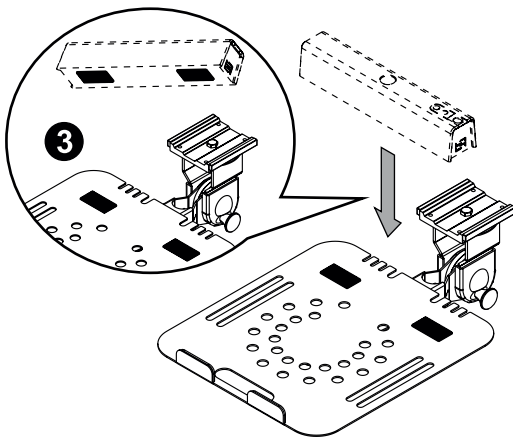


Please make sure pad is adhered properly before assembly.

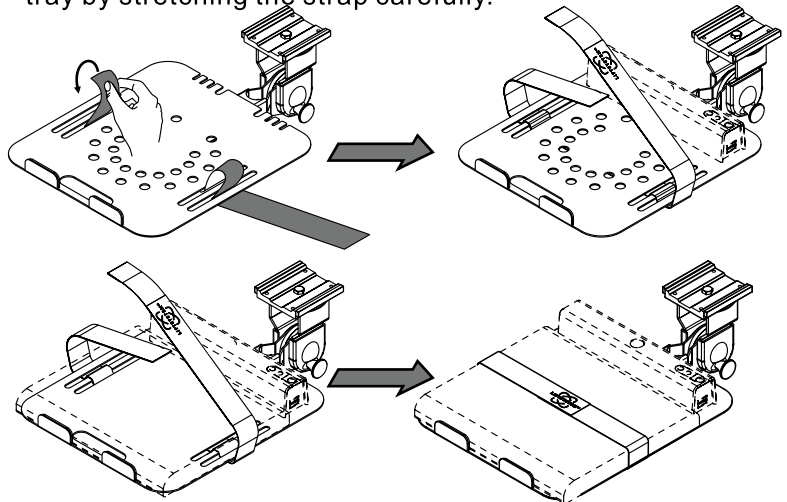
- 2** Pull out the handle and then move the metal tray upper 90 degree.



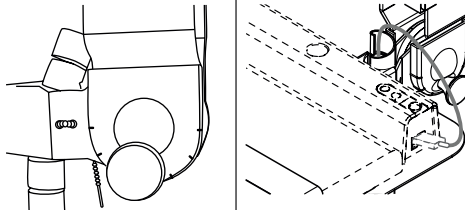
- 3** Take two set VELCO to fix your docking station.



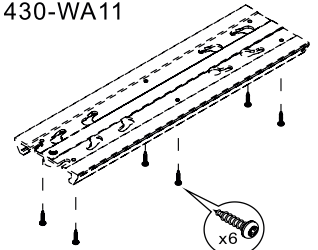
- 4** Take the elastic strap goes through two holes on the metal tray by stretching the strap carefully.



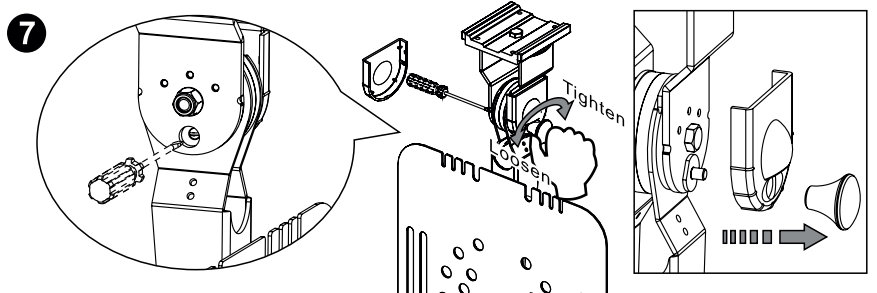
- 5** Use small cable strap to organize cable first then use cable management collect them beside the arm.



- 6** Note: As an option for mobile montage, use additional LiftSystem Track Codeno 430-WA11



## IMPORTANT! ADJUST FRICTION ON DEMAND!



### Caution:

Regular cleaning with a clean dry cloth is usually sufficient, but for stubborn marks, wipe over gently with a clean damp cloth. Never use strong detergents or abrasive cleaners as these may damage the surface finish of your furniture. There are many small components used in the construction of this unit. These loose items should be kept away from young children while assembling your unit.

