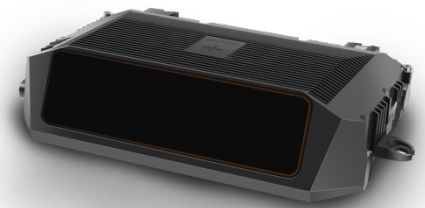


Falcon

VISION, REDEFINED



Falcon is an ultra-long-range automotive-grade LiDAR that is in mass production today. Using 1550nm laser technology, Falcon can detect objects as far as 500 meters, and dark objects with 10% reflectance up to 250 meters. A configurable ROI (Region-of-Interest) feature allows you to easily and dynamically focus on key areas of interest.

Customer Benefits

- 1550nm laser technology enables ultra-long-distance detection
- Real-time, adjustable Region of Interest
- Highly configurable features to meet your specific needs
- Exceptional thermal performance
- In mass production today

250m @ 10%

Range

500m*

Max Range

10 FPS

Frame Rate

SW Configurable

120° x 25°

Field Of View

1500

Scan Lines / sec

0.08° x 0.09°

ROI Resolution

0.05° x 0.05° min

* Option for 1000m range performance available

Sensor Specifications

Detection Range	250m
Detection Range (max*)	500m*
Distance Precision	+/- 2cm@1sigma
Configurable Frame Rate	10 – xx FPS
Field of View (H*V)	120° x 24,5°
FOV of ROI (configurable)	40° x 4,8°
ROI Resolution (standard, configurable)	0.09°x0.08°
ROI Resolution (minimum)	0.05°x0.05°

Outputs

Data Transfer	1000 Base-T1
Automotive Network	CAN
Data Output	Pointcloud (X,Y,Z), Intensity or Reflectance
Data Transfer	NTP , PTP , GPTP
Time Synchronization	10µsec resolution for each data point

Electrical

Operating Voltage	9-34V DC
Power Consumption	29W, nominal

Laser

1550nm
Class 1 (IEC-60825)

Physical

Dimensions (H x W x D)	60 x 228 x150 mm
Operating Temperature	-40° to 85° C
Enclosure Rating	Case: IP67, Front Panel: IP69K

