

Pole Mounting Bracket



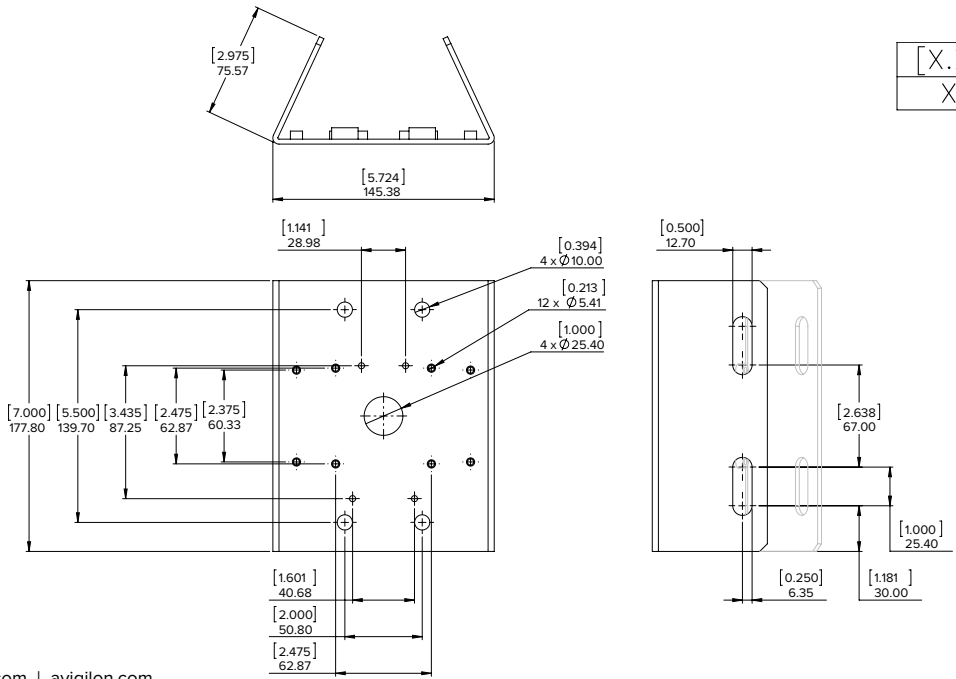
H4-MT-POLE1

Aluminum pole mounting bracket for dome cameras using the pendant wall mount and bullet cameras

Weight: 0.458 kg (1.01 lbs)

- Female inserts
- Compatible with:
 - Pendant Wall Mount (H4A-MT-WALL1) for H4A Pendant Dome Cameras
 - Pendant Wall Mount (CM-MT-WALL1) for H4 SL, H4 Fisheye, H4 PTZ and H3 Multisensor (H3-xMH-DP1-B) Dome Cameras
 - HD Bullet Cameras (H4A-BO-IR)
 - H4 SL Bullet Camera (H4SL-BO-IR)
 - HD Bullet Camera Junction Box (H4-BO-JBOX1)
 - H3 Bullet Camera Junction Box (H3-BO-JB)
 - H3 Pendant Wall Arm (MNT-PEND-WALL)
- 6”–20” Metal straps included
- Minimum pole diameter is 152.4 mm (6”)
- Maximum pole diameter is 508 mm (20”)

- RAL 9003 Included components for Avigilon camera and accessories:
- 4 x Hex head bolts (3/8” – 16 x 1”)
 - 4 x Lock washers (3/8”)
 - 4 x Flat washers (3/8”)
 - 4 x Hex head bolts (M4-0.7 x 30)
 - 4 x Lock washers (M4)
 - 4 x Flat washers (M4)
 - 2 x 6” – 20” Metal straps



[X.X]	INCHES
X	MM

SUPPORT asales@avigilon.com | avigilon.com