









## GB OPTICAL SMOKE ALARM DEVICE PEBBLE

Congratulations on the purchase of your new smoke alarm device. We recommend that you spend some time reading this instruction manual in order to fully understand all the operational features. You will also find some hints and advice to help you resolve any issues. Read all the safety instructions carefully before use and keep for future reference.

The Housegard smoke alarm device is designed to detect smoke particles and to reduce the number of false alarm. The Housegard smoke alarm device is designed to give an early warning if a fire occurs, but it's operation depends on correct positioning and maintenance.

### FEATURES

- Early warning
- High sensitivity and stability
- Test function
- LED diode indicates normal operation
- Low battery warning
- Swedish design
- Less false alarms



### TECHNICAL SPECIFICATIONS

Model No:	SA700
Detection type:	Photo electric
Power source:	9V
Standby current:	<10 uA
Alarm current:	<20 mA
Alarm sound level:	85 dB /3 m
Operating temperature:	-10 °C - +40 °C
Ambient humidity:	95% RH

### IMPORTANT SAFETY INFORMATION

1. The smoke alarm device is battery-powered. The smoke alarm device will not work without batteries, or if the batteries are dead, removed or not correctly connected. Only use the specified type of battery. DO NOT connect the smoke alarm device to any type of detector or equipment other than what is stated in this manual.
2. The test button provides a full test of all the smoke alarm device's functions. No other test methods are required. Test smoke alarm devices every week to check that they are working properly.
3. Do not remove or disconnect the batteries to stop false alarms, as this will cause the smoke alarm device to lose important functionality. Open a window or ventilate the air around the smoke alarm device to stop the alarm and/or press the pause button.
4. The smoke alarm device must be installed in line with all local and national rules and regulations on installation.
5. The smoke alarm device is intended for use in houses. In apartment blocks, each apartment should be fitted with its own smoke alarm device. This smoke alarm device is not suitable for use in non-residential buildings. The smoke alarm device is not a replacement for a complete alarm system as required under law or by the fire safety authorities.
6. There may be reasons why a person in a household might not hear the alarm (e.g. noise, deep sleep, impaired hearing). If you suspect that a person in the household will not hear the smoke alarm device, specialist alarms should be installed. If a person in the household has impaired hearing, special alarms should be installed to alert the person via sound, light and vibrations.
7. The smoke alarm device detects combustion particles in the air (smoke). It does not react to flames or gas. The smoke alarm device is designed to give off an audible alarm if a fire is developing.
8. No smoke alarm devices are entirely reliable and they cannot give a 100% guarantee to protect life and property against fire. The smoke alarm device is no replacement for insurance. Homeowners and tenants should take out life and home insurance.
9. The smoke alarm device should be tested regularly and replaced every ten years.

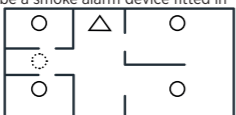
**Note:** For maximum safety, install a smoke alarm in each room.

### POSITIONING THE SMOKE ALARM DEVICE

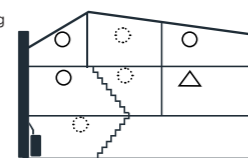
For the smoke alarm device to give an early warning, it needs to be installed where the fire occurs. Housegard therefore recommends that you install a smoke alarm device in every room and on all floors.

#### Correct placement of the smoke alarm

- Install a smoke alarm device in all separate bedrooms and in rooms commonly occupied.
- In homes with several storeys, a smoke alarm device should be installed at the top of every staircase between each storey.
- In the basement, a smoke alarm device should be installed on the ceiling at the foot of the stairs.
- In bedrooms where people sleep with closed doors, there should always be a smoke alarm device fitted in the bedroom.
- Install a smoke alarm device in every room where there is a potential risk of fire.
- Install a smoke alarm device at each end of corridors, if they are longer than 9 metres.
- Install the smoke alarm device in the middle of the ceiling. If this is not possible, install the smoke alarm device on the wall at least 0.5 m from any corner and at least 10–15 cm from the ceiling. (Wall-mounting is not recommended).



Single-story residence, apartment



Multi-story residence

#### KEY:

- Minimal protection
- Recommended/more substantial protection
- △ Smoke alarm devices with a pause function are recommended

### SMOKE ALARM DEVICES SHOULD NOT BE PLACED IN THE FOLLOWING LOCATIONS

1. In the kitchen, near the cooker, where smoke from cooking could cause false alarms.
2. In areas of high air humidity, such as bathrooms or near dishwashers or washing machines, where steam and moisture could cause false alarms.
3. Near fans and ventilation ducts, where air flows may prevent smoke from reaching the smoke alarm device.



4. Near light sources and electrical equipment that emit an electromagnetic field.
5. Near a fireplace or stove with an open fire.
6. At the top of a V-shaped ceiling, where air pockets could stop the smoke from reaching the smoke alarm.
7. In a garage, where exhaust fumes could cause false alarms.
8. In dusty and dirty areas, where the dust and dirt could damage the smoke alarm device.
9. In rooms where the temperature may fall below -10°C or rise above +40°C, or in rooms with large temperature variations.

**WARNING:** Incorrect positioning may lead to reduced reliability and false alarms.

### PROTECT YOUR HEARING

Smoke alarm devices emit a loud audible signal. We recommend that you always use earplugs or other hearing protection when testing your smoke alarm devices.

### HOW TO INSTALL YOUR SMOKE ALARM ALARM

**VARNING:** Installation av brandvarnaren skall utföras i enlighet med krav i nationella lagar, förordningar och alla andra lokala regler som eventuellt tillämpas.

1. Remove the mounting plate on the back of the smoke alarm by twisting it anticlockwise.
2. Install the battery.
3. Install the mounting plate in the chosen position on the ceiling. Take care to position your smoke alarm device properly.
4. Place the smoke alarm device against the mounting plate and twist the smoke alarm device clockwise until it clicks into place.
5. Press the test button to test the smoke alarm device.

### OPERATION

During normal operation, the smoke alarm device's LED flashes every 40 seconds. This means that the battery and the unit are working correctly. If the alarm detects smoke, it will emit three loud, pulsing warning signals and the red LED will flash twice at the same time in a cycle.

**FOR YOUR SAFETY! NEVER IGNORE A SMOKE ALARM DEVICE THAT HAS GONE OFF. WHEN YOU HEAR THE ALARM SIGNAL, YOU MUST GIVE IT YOUR FULL ATTENTION AND ACT ACCORDINGLY.**

### MEANING OF THE DIFFERENT LED AND ALARM SIGNALS

STATUS	RED LED	ALARM SIGNAL	DESCRIPTION
Normal mode	Flashes once every 40 seconds	None	Smoke alarm has power and is working normally.
Low battery	Flashes once	Loud audible signal	Replace the battery with a similar battery
Fault warning	None	Loud audible signal	Indicates a fault with the smoke alarm.
Alarm mode / test mode	Flashes twice	Three loud audible signals	Smoke alarm is warning you there might be a fire

### TESTING THE SMOKE ALARM DEVICE

1. Always test all alarms after installation to ensure that they are functioning properly.
2. The test button performs a full test of all functions. Never use a naked flame to test the smoke alarm device, since this can destroy the alarm.
3. Test your smoke alarm device routinely once a week.
4. Always test your smoke alarm devices after a long period of absence from the home and always when you return from a holiday.
5. Always stand at arm's length when testing your smoke alarm device to avoid damage to your hearing.

### CAUSES AND REMEDIES FOR FALSE ALARMS

A smoke alarm device detects and reacts to smoke particles in the air. The smoke particles set off the smoke alarm device. This function means that the smoke alarm device will also react to dust particles, moisture or other particles in the form of pollen, insects and so on. These factors are usually the cause of a false alarm.

Cause of error	Action
<b>Steam and moisture.</b> A false alarm may occur if the smoke alarm device is placed too close to a bathroom, laundry room, or other location with high air humidity.	Place the smoke alarm device at least 2 metres from any bathroom, laundry room, or other location where high air humidity may occur.
<b>Dust and dirt.</b> Since air passes freely through the detection chamber, the smoke alarm device will always attract some dust and pollen particles. This can lead to a false alarm. The smoke alarm device may also become more sensitive for this reason, which could cause false alarms. In addition, dirt will collect over time, as the smoke alarm device ages, which may result in false alarms.	Regularly vacuum the smoke alarm device, using a plastic nozzle to avoid damaging the electronics. Avoid fitting smoke alarm devices in places with a lot of dust and dirt. You can put a 'hat' over the smoke alarm device or remove it entirely while you are carrying out renovation work at home that involves sawing, sanding, etc.

## GB

**Draughts, dust and air flows.** False alarms may be caused by the smoke alarm device being placed too close to doors, windows, ventilation systems, fans, air ducts, heat pumps or suchlike. This can lead to dust particles being carried up into the detection chamber.

Do not install smoke alarm devices in a draughty location, close to windows or doors, ventilation, fans, air ducts, heat pumps or suchlike. Find a better location for the smoke alarm device, further away from draughts and air flows.

**Temperature variations.** Temperature variations may lead to condensation in the detection chamber. This may happen, for example, if the smoke alarm device is placed in a room where windows are opened for ventilation in the winter, or close to exits, balcony doors or other places that switch between hot and cold.

Avoid fitting smoke alarm devices in rooms with rapid temperature changes or close to windows and doors that are frequently opened and closed. Move the smoke alarm device to a place with a more even and stable temperature.

**Generally unfavourable positions.** Incorrect positioning in an unstable indoor environment, a draughty area, close to electronic apparatus (EMC) and lighting may cause a false alarm.

Place smoke alarm devices at least 5 metres from open fires, stoves or other heating devices; 2 metres from ventilation ducts, heat pumps and air conditioning; 1 metre from light bulbs and fluorescent tubes.

### TROUBLESHOOTING

**Varning:** Ta inte bort batterierna för att stoppa oönskade larm.

Problem	Åtgärd
The smoke alarm device gives off no signal when tested.	Check that the battery still have some charge.
The smoke alarm device flashes and emits a short audible signal	1. This indicates low battery charge. 2. Fault, replace the alarm.
The smoke alarm device goes off when there is no smoke, or when cooking, etc.	1. Clean the smoke alarm device. See also section on false alarms. 2. Change the location of the smoke alarm device. See section on false alarms.

### TYPE OF BATTERY

Voltage:	DC 9V
Type:	Gold Peak 1604S, Gold Peak 1604A
Battery life:	Approx. 12 months

### CLEANING AND MAINTENANCE

The smoke alarm device should be cleaned regularly, and at least twice a year. Clean your smoke alarm device by vacuuming externally along the opening to the detection chamber to remove dust and dirt.

**IMPORTANT:** Do not try to open the cover to clean inside the smoke alarm device. This will negate the warranty.

### WARRANTY

This smoke alarm device comes with a 5-year limited warranty against manufacturing defects. (valid from date of purchase.) The batteries are not covered by the warranty. Liability under the warranty is limited to the value of an equivalent smoke alarm device. Defective smoke alarm devices should be returned to the retailer, along with a description of the problem. If the claim is approved, the faulty goods will be replaced with a new smoke alarm device of the same or an equivalent type. Any claim must be accompanied by a receipt confirming the date of purchase.

### EC DECLARATION OF CONFORMITY

Sunmatic The Safety Company AB  
Argongatan 2B  
SE-43153 Mölndal

Hereby declare under our sole responsibility that the product: Housegard model smoke alarm SA700  
To which this declaration relates is in conformity with the following standards and/or other normative documents:  
EN 14604:2005/AC:2008

Technical file held by: Sunmatic The Safety Company AB

*Frank W. Ottesen*

Mölnal 2018-10-10

Frank Willy Ottesen  
Technical Manager

CE 18

1134  
DOP: 601107-CPR-0518  
EN 14604:2005+AC:2008  
Cert: 1134-CPR-214